



Ziehm Vision / Ziehm Vision FD
The new standard in mobile
imaging

- Flat-Panel Detector
- Image Intensifier



Detailed view from every angle thanks to high brightness 19" TFT color flatscreens

➤ 04

High resolution thanks to dynamic CCD camera with 1k x 1k technology

➤ 04

Intuitive workflow with synchronized TFT touchscreens on C-arm and monitor cart

➤ 08

Easy integration into existing networks (with WLAN option)

➤ 10

Advanced Active Cooling for long and demanding procedures

➤ 10

C-arm movements are fully counterbalanced in all positions

➤ 08

Ziehm Vision. This C-arm sets a new benchmark in high-end mobile imaging while minimizing dose levels. It delivers state-of-the-art functionality by bundling finely tuned components with proprietary innovations. As the technology platform for the entire C-arm product family, Ziehm Vision fits the broadest spectrum of clinical applications. The optional, leading-edge flat-panel detector (FD) enables fully digital, distortion-free imaging. Thanks to its high-dynamic range, it also allows optimal, concurrent soft tissue and skeletal imaging at the same time.

For the most demanding applications. The world's first C-arm with flat-panel.

→ Larger opening

Measuring 89.5cm, the larger C-arm opening allows easier patient access and improved positioning.

→ Distortion-free imaging

The world's first C-arm with flat-panel technology enables fully digital, distortion-free imaging. In addition, insensitivity to magnetic fields gives the operator added flexibility.

→ High-dynamic images

Due to its high-dynamic range, the flat-panel detector enables optimal concurrent soft tissue and skeletal imaging.

→ Automatic adjustment

Ziehm Adaptive Image Processing (ZAIP) enhances image quality by adjusting settings fully automatically to anatomical conditions and regulating filters in real-time.

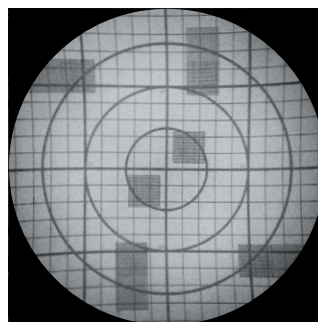
→ Larger field of view

The larger surface and square shape of the panel increases the image size compared with conventional image intensifiers.

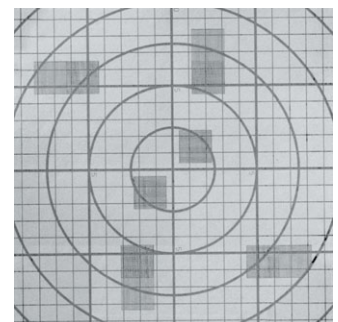
Compared field of view of flat-panel and conventional image intensifier



Image intensifier with S-shaped and pincushion distortion



Flat-panel with distortion-free image



Larger field of view

High-dynamic images
with more than
16,000 levels of gray

Flat-panel technology
for fully digital, distortion-
free imaging

Flat-panel highlights:
→ Larger opening
→ Distortion-free imaging
→ High-dynamic images
→ Larger field of view

Larger opening:
89.5 cm C-arm opening
for easy handling



01 / Perfect results. A range of finely tuned components ensures highest image quality.

→ Sharp pulses for sharper images

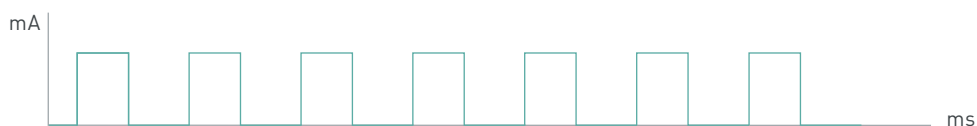
Ziehm Vision comes with a highly compact monoblock generator. It generates short, sharp pulses with up to 25 frames per second, producing crystal-clear images even if the patient is moving. This intelligent pulse technology also reduces dose (as illustrated below).

→ High-dynamic camera system

The high-dynamic CCD camera is a key component in the imaging chain. With 1k x 1k resolution and more than 4,000 shades of gray, it visualizes even the smallest anatomical structures. The optional flat-panel technology raises this to more than 16,000 shades of gray for even more detailed images.

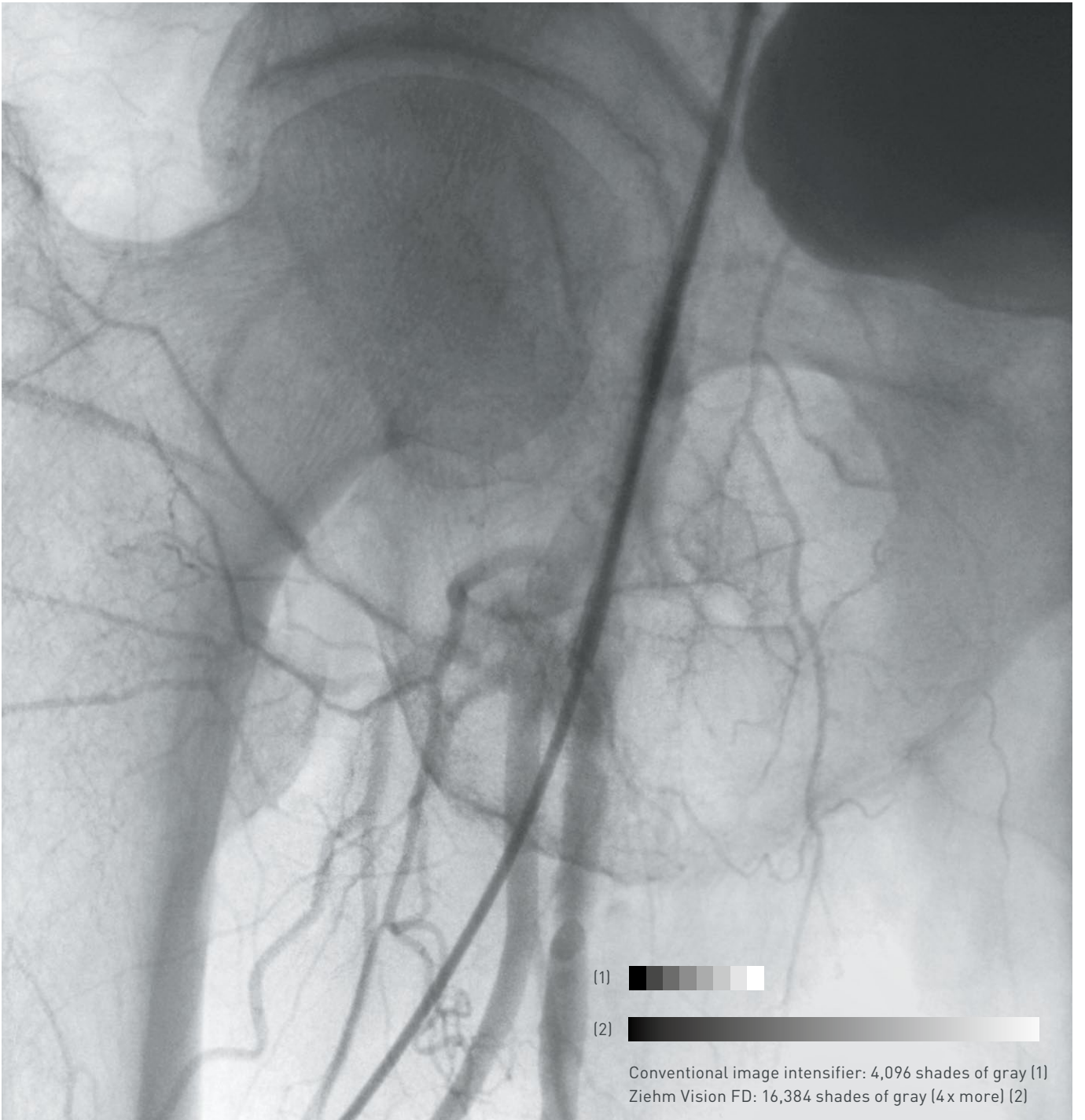
→ Contrast-rich display

Among monitors, Ziehm Imaging's dual 19" TFT color flatscreens stand out for their exceptional brightness and contrast. Even at a distance, the high-end monitors provide the physician with optimal insights by visualizing the finest details – from every angle.



Intelligent pulse technology based on short, sharp pulses minimizes dose and maximizes image quality.





(1)

(2)

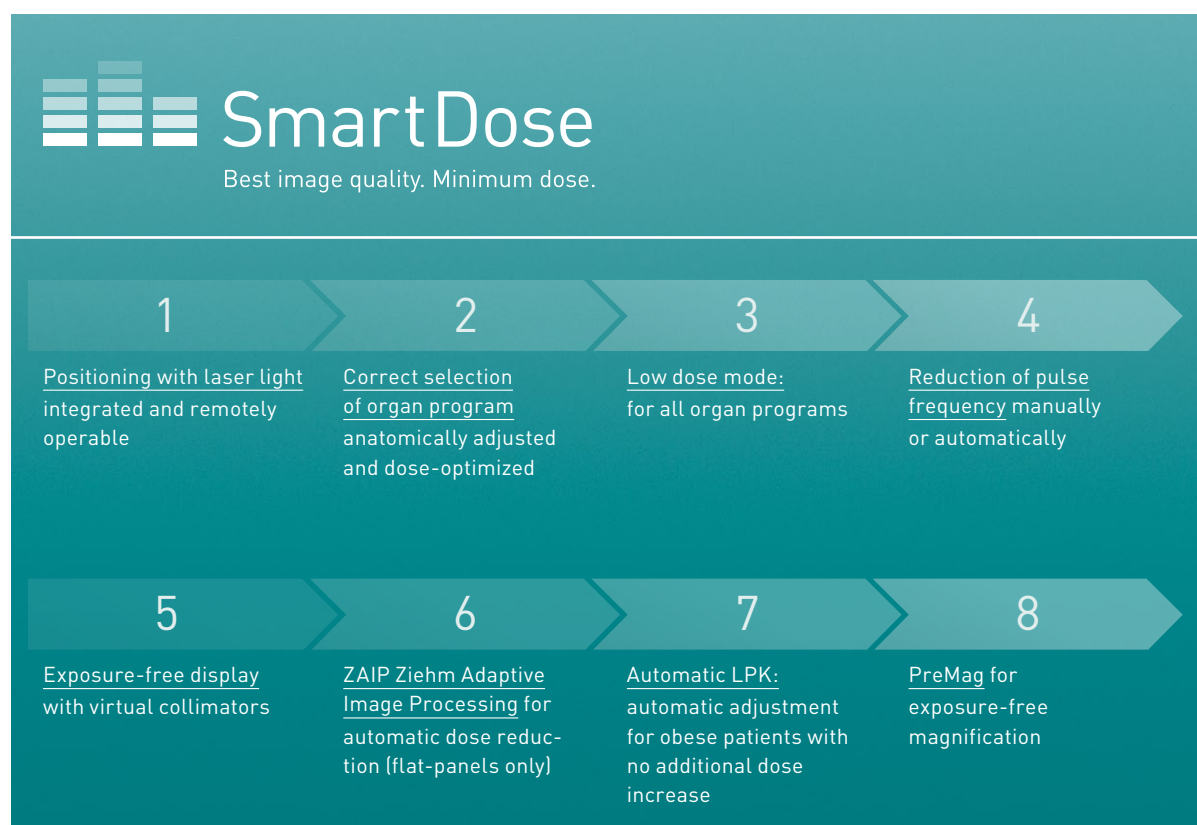
Conventional image intensifier: 4,096 shades of gray (1)
Ziehm Vision FD: 16,384 shades of gray (4x more) (2)

02 / Smart Dose. Best image quality. Minimum dose.

→ Comprehensive concept for dose reduction

Ziehm Imaging has incorporated SmartDose in the current generation of mobile C-arms. This comprehensive concept for dose reduction allows the physician and staff to significantly reduce dose while optimizing image quality. SmartDose benefits both patients and staff alike. With savings up to 60 % Ziehm Imaging sets the benchmark in user-friendly adjustment of dose exposure.

To achieve best results in intraoperative imaging, all C-arms with flat-panel detector are equipped with ZAIP (Ziehm Adaptive Image Processing) using hardware-based filters and the latest algorithms for noise filtering, edge enhancement and dose optimization.



→ Automatic adjustment of settings

Ziehm Vision greatly simplifies patient positioning and dose control. ODDC technology (object detected dose control) creates a matrix over the entire scan field and uses 256 measurement cells to scan the region of interest in real time. All settings, including the dose level and noise filters, are automatically adapted to the patient's position.

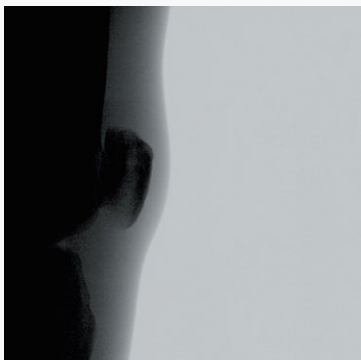
ODDC's measurement cells automatically detect motion. If the patient is not moving, the pulse frequency can be lowered significantly. If, however, motion is detected in the region of interest, the pulse frequency automatically increases to a maximum of 25 frames per second.

ODDC reduces patient dose and overexposure. The system detects metal parts in the scanned zone (e.g. plates, pins, instruments or implants) and automatically adjusts generator output and video levels to reduce metal distortion and improve image quality.

"The average dose reduction when using 25 pulses/sec resulting from object detection and automatic down-pulsing was 21 %, and the maximum dose reduction was 60 %."

[Gosch D. et al. "Influence of Grid and Object Detection on Radiation Exposure and Image Quality using Mobile C-Arms – First Results", RöFo, 09/2007, page 896 onwards]

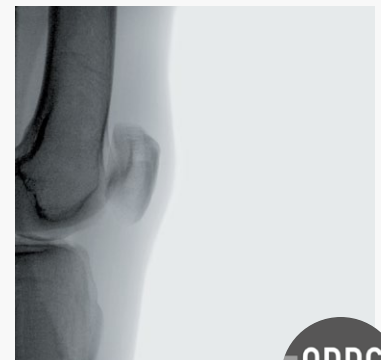
ODDC highlights



Conventional image quality



ODDC: Grid-controlled adjustment of radiation levels, filters and pulse frequency



Crystal-clear images achieved with minimal doses



03 / New dimension in usability. Ziehm Vision supports your clinical workflow and sets standards for intuitive guidance.

→ Best-in-class ergonomics

With a footprint of 0.8 m², Ziehm Vision is one of the smallest C-arms on the market. Its compact design and easy-drive system means it can be maneuvered with minimal effort during procedures. All steer and brake functions are activated via a single lever. All C-arm movements are fully counterbalanced in every position, making the unit extremely comfortable to use. In addition, different color levers allow the surgeon and staff to quickly and easily select the desired function.

→ Intuitive workflow

The Vision Center is a rotating and tilting touchscreen control panel mounted on the mobile stand and the monitor cart. It provides access to the same, synchronized controls found on both units. This intelligent user interface coupled with clear and easy-to-follow icons makes operating the imaging system easy and intuitive. From a short list of anatomical programs, the operator simply selects the desired option to automatically adjust the imaging parameters to the region of interest, always ensuring the best image quality and lowest dose levels. Additionally, with SmartArchive it has never been easier or faster to access the current patient data at any time.

→ Fit for the future

The Vision Center is a touchscreen with an open, modular software architecture, ensuring maximum flexibility. This interface can be easily upgraded and expanded with additional software modules without the need for hardware changes.

Above: Optimal counterbalanced C-arm movements for fast and easy positioning

Below: Ziehm SmartEye displays the live X-ray image on the user interface. SmartControl enables the user to intuitively manipulate the X-ray image directly from the touchscreen.



→ Prolonged use

C-arms need to be in continuous use during lengthy, demanding procedures such as vascular and cardiac interventions. Ziehm Vision's Advanced Active Cooling system (AAC) keeps the generator at an ideal operating temperature and in the event of a temperature increase, the pulse frequency is automatically reduced, until the generator's temperature has cooled down. This guarantees uninterrupted usage especially during long and difficult procedures.

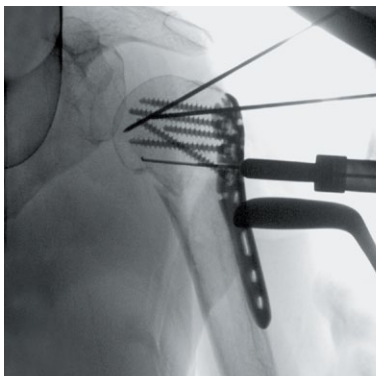
→ Seamless integration

The open interface, Ziehm NetPort, enables easy integration into existing IT networks. Patient data saved in DICOM 3.0 format is transferred – via WLAN for example – to the PACS or HIS/RIS. Data can be retrieved from the monitor cart at any time. Data can also be backed up to DVD or USB and be printed on transparencies or paper.

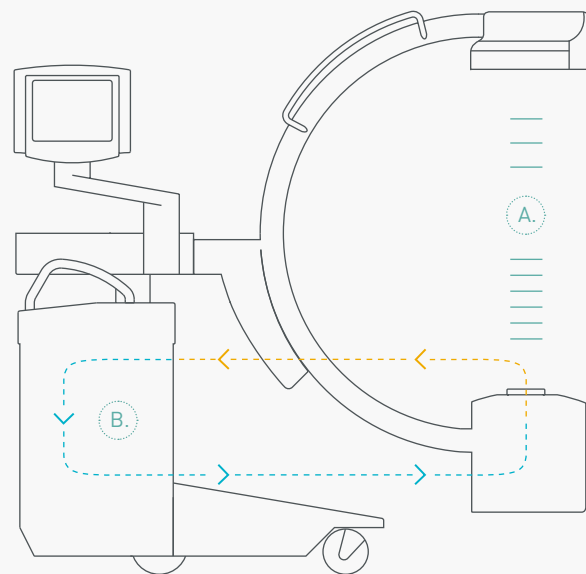
→ Compatibility with navigation systems

Ziehm Vision with a 23 cm image intensifier is compatible with 2D navigation systems to enable real-time navigation and pin-point precision during surgical procedures.

Continuous imaging even during demanding procedures



Advanced Active Cooling keeps generator temperatures down and automatically adapts the pulse rate



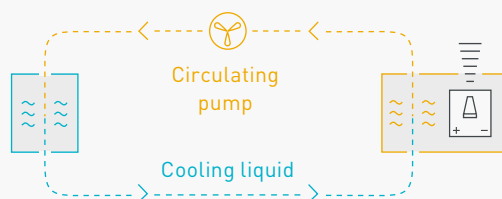
A.

Automatic pulse regulation ensures continuous imaging

B.

Cooling cycle, heat exchanger

High capacity heat radiator with cooling liquid



Pulsed monoblock generator: Heat is transferred to a built-in heat radiator

04 / Broadest application spectrum. Our units are engineered for the widest range of clinical applications.

Ziehm Imaging sets new standards for C-arm functionality with Ziehm Vision. It is the solution of choice for demanding minimal-invasive and interventional procedures such as vascular surgery, cardiology, neurosurgery, trauma and orthopedics. Equipped with leading-edge flat-panel technology, Ziehm Vision FD is also ideally suited to interventional radiology.



Ziehm Vision



Ziehm Vision FD

Product	Ziehm Vision	Ziehm Vision FD
1k x 1k technology	•	•
Shades of gray	4,096	16,384
Distortion-free imaging	–	•
Fully digital imaging	–	•
Pulsed monoblock generator	•	•
ZAIP (Ziehm Adaptive Image Processing)	–	•
ODDC	•	•
DICOM	optional	optional
Interface to 2D navigation systems	23 cm l.l. only	–
WLAN	optional	optional
Advanced Active Cooling	•	•
C-arm opening	76 cm	89.5 cm
Field of view 9"/23 cm	363 cm ²	–
Field of view 19.9 cm x 19.9 cm	–	396 cm ²
Field of view 12"/31 cm	594 cm ²	–

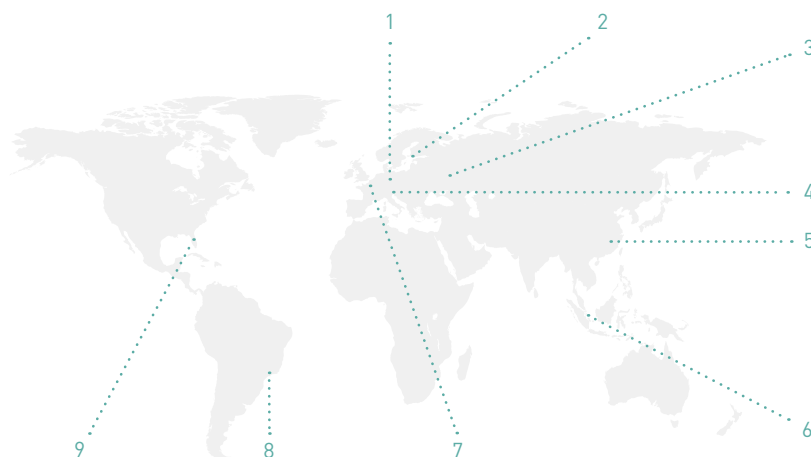
05/Service. We make sure you get the best results from the best products.

→ Close to you

Regardless of your needs, our experts are on hand. Thanks to our worldwide network of service centers, you can always rely on Ziehm Imaging for flexible and fast service.

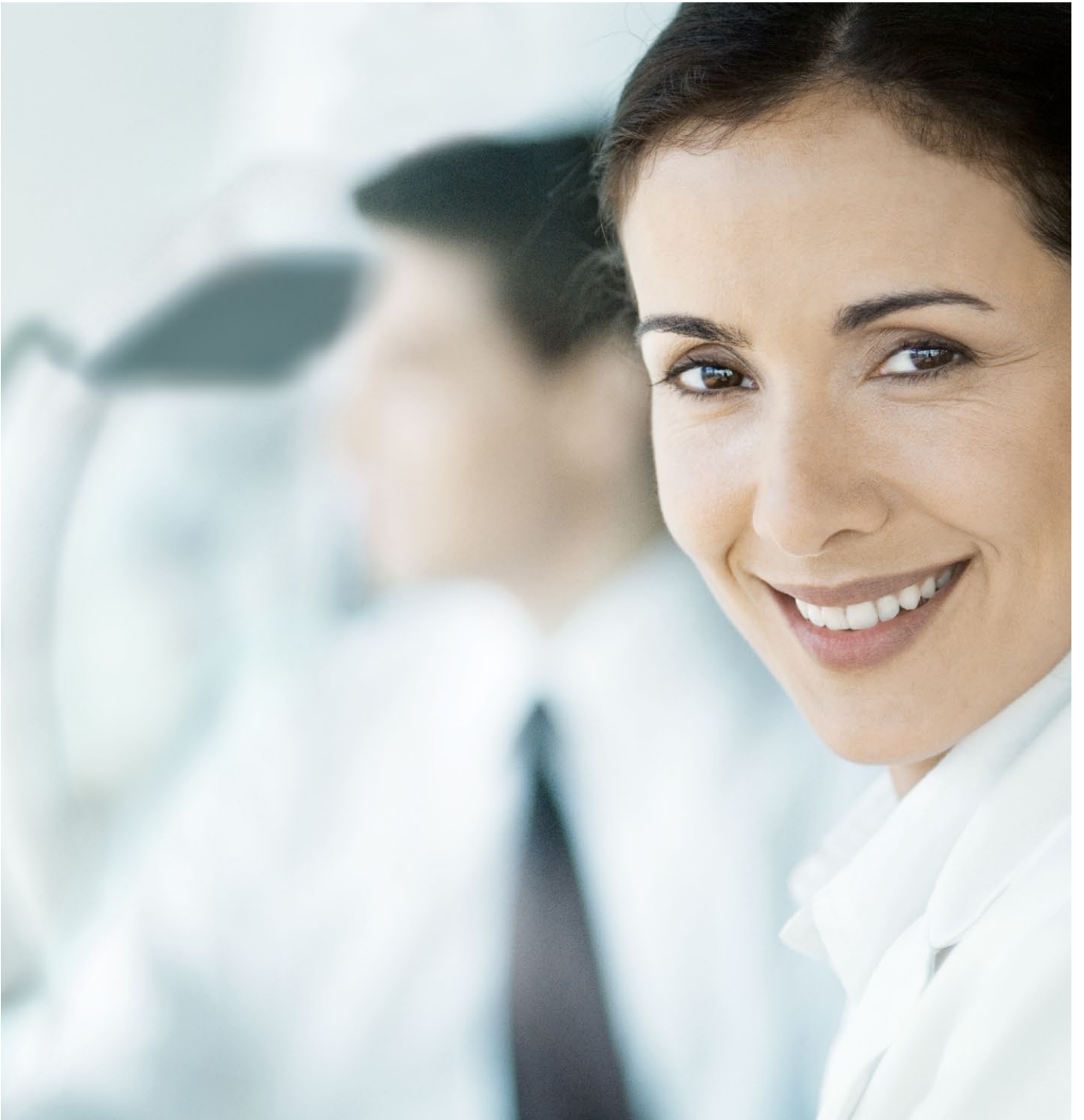
→ Keeping you at the cutting edge

With Ziehm Academy you can enhance your clinical knowledge, find out more about mobile C-arms and receive made-to-measure trainings. The courses cover the full clinical spectrum, from general operator training and technical workshops through to high-level training sessions.



Offices

- | | |
|-------------------------|-------------------------|
| 1 Nuremberg (Germany) | 6 Singapore (Singapore) |
| 2 Kerava (Finland) | 7 Paris (France) |
| 3 Moscow (Russia) | 8 São Paulo (Brazil) |
| 4 Reggio Emilia (Italy) | 9 Orlando, FL (USA) |
| 5 Shanghai (China) | |



Headquarters

Germany

Ziehm Imaging GmbH
Donaustrasse 31
90451 Nuremberg, Germany
Phone +49.(0)9 11.21 72-0
Fax +49.(0)9 11.21 72-390
info@ziehm-eu.com

USA

Ziehm Imaging Inc.
6280 Hazeltine National Dr.
Orlando, FL 32822, USA
Phone +1.(407) 6 15-8560
Fax +1.(407) 6 15-8561
mail@ziehm.com

Italy

Ziehm Imaging Srl.
Via Martiri di Legoreccio. 14
Località Croce
42035 Castelnuovo né Monti
Reggio Emilia, Italy
Phone +39.0522.610894
Fax +39.0522.612477
sergio.roncaldi@ziehm-eu.com

Brazil

Ziehm Medical do Brasil
Av. Roque Petroni Jr.,
1089 cj 904
04707-000 São Paulo, Brazil
Phone +55.(11)3033.5999
Fax +55.(11)3033.5997
samuel.almeida@ziehm.com

France

Ziehm Imaging S.A.R.L.
1, Allée de Londres
91140 Villejust, France
Phone +33.1 69 07 16 65
Fax +33.1 69 07 16 96
thierry.dodier@ziehm-eu.com
dominique.desvoux@ziehm-eu.com

China

Ziehm Medical Shanghai Co., Ltd.
Hongqiao New Tower Centre
Rm 06-07, 25/F
83 Loushanguan Road
Shanghai, P.R. China; 200336
Phone +86.(0)21.62369903
Fax +86.(0)21.62369916
kevin.tang@ziehm.net.cn

Russia

Ziehm Imaging Russia
4/17 bldg. 4A
Pokrovsky bulvar
Moscow, 101000, Russia
Phone +7.495.7757321
Fax +7.495.7757324
dmitry.makovkin@ziehm-eu.com

Singapore

Ziehm Imaging Singapore Pte. Ltd.
7030 Ang Mo Kio Ave 5
#08-53 Northstar@AMK
Singapore 569880, Singapore
Phone +65.639.18600
Fax +65.639.63009
colin.luo@ziehm-eu.com